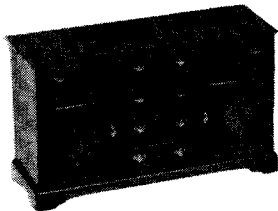


COLLECTORS NO. 40053



Cupboard Base
Circa 1770

This piece is a miniature reproduction of an antique located in one of the older homes in New England. Many pieces of this type of furniture, along with their cupboard top, have survived mainly due to their size and styling, as well as their utilitarian design. They were usually topped by an open or glass-doored set of shelves where the best of the household china was displayed. The drawers held the silverware, linens, etc. The storage space behind the doors was used to store larger serving pieces, or the everyday dishes. Today, the most common name for the combination of the two pieces, is a hutch cabinet. The originals were known by many names such as, Welch cupboard, hutch cabinet, country cupboard, etc. However, by any name, alone or with a top section, it is an attractive addition to any home.



AUTHENTIC REPRODUCTIONS IN MINIATURE

The X-ACTO® House of Miniatures® Collectors Series of furniture and accessories have all been carefully researched by specialists through major museum and library collections to assure the highest quality of authenticity in reproduction. Details are extraordinarily accurate to satisfy the most discriminating miniaturist.

All wood parts are machined to assure accurate and precise acceptance of each piece by another.

For a complete catalog of the X-ACTO® HOUSE OF MINIATURES furniture line and accessories, write to:

X-ACTO® THE HOUSE OF MINIATURES Dept. KIT
45-35 Van Dam Street
Long Island City,
New York 11101

Please include \$2.00 for postage and handling.

TOOLS AND MATERIALS

A. The following tools will be helpful in constructing this kit:

1. Two-inch Sander, X-ACTO No. 7042
2. Large Clamp, X-ACTO No. 4004
3. Small Clamp, X-ACTO No. 4003
4. X-ACTO Professional Finishing Kit (or equivalent, see note)

B. The following materials will be needed to construct this kit:

1. X-ACTO Tinted Glue (see note)
2. Waxed paper
3. Sandpaper - 220 and 280 grit
4. Steel Wool - Grade 0000
5. White glue (or equivalent)
6. Small Artist's Brush

NOTE: The X-ACTO tinted glue is matched to the finish used in the Professional Finishing Kit. This will produce the authentic finish of the period in which the original Furniture was produced. When not using X-ACTO glue follow manufacturer's directions.

GLUING

- A. Glue should be applied in small amounts to surface being joined. When gluing dado joints apply glue to dado only.
- B. To ensure a tight fit, squeeze excess glue out of the joints. Hold glued parts together with clamps, rubber bands or weights on the parts.
- C. Wipe off excess glue promptly.
- D. Be sure a glued assembly has dried thoroughly before adding parts.

FINISHING

The X-ACTO Professional Finishing Kit enables you to finish your furniture by the same process used by the professional furniture maker. The end result is what is important — there are easier methods, but none that will give the quality results that this process will. If you use a finish other than X-ACTO's, refer to the manufacturer's directions.

INTRODUCTION

BEFORE STARTING

Identify and account for each part by placing it on the Layout Sheet (make sure the correct layout sheet is used when working on multi-kit Instruction Sheets). Should any parts be missing, send a post card to:

X-ACTO/The House of Miniatures
45-35 Van Dam Street
Long Island City, N.Y. 11101

Please print Name, Address, Part Number (Number from Layout Sheet) and Kit Name and Number on card when ordering.

SANDING

Before assembly, sand all the outer surfaces of individual parts with 220 grit sandpaper, or finer, sanded in the same direction as the wood grain until the surface is smooth. Take care not to round any edges or corners of the pieces. Finish sanding with 280 grit sandpaper.

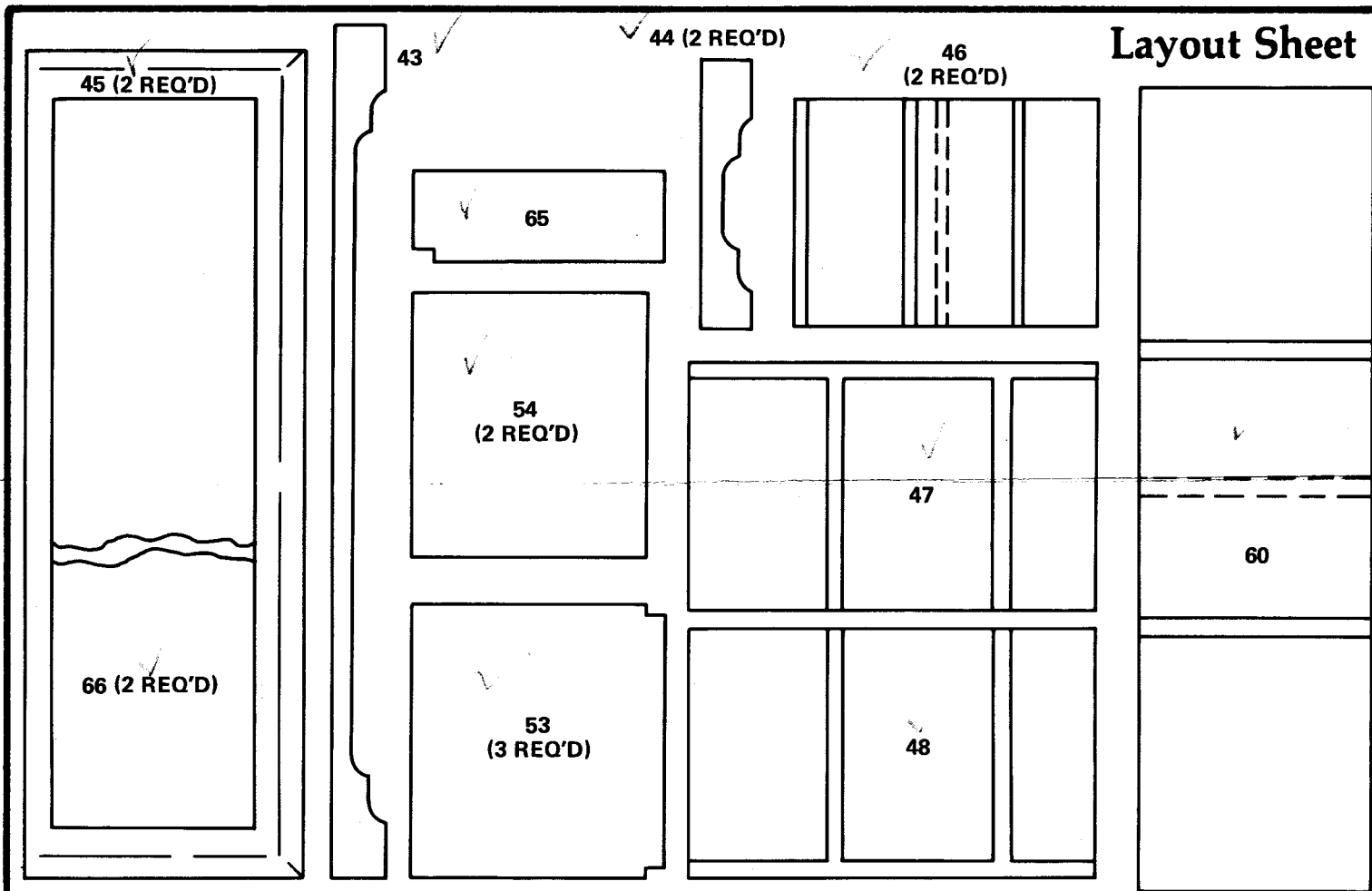
PRE-ASSEMBLY

- A. After sanding, check the proper location and fit of each part by assembling parts loosely, without gluing. Use the **DETAIL VIEWS** as a guide.
- B. All parts for X-ACTO kits are made on precision milling machines. When adjustments are required, sand to fit.

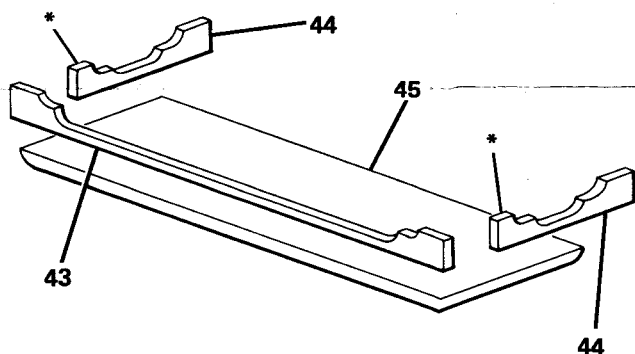
Detail Views

Kit 40053

Layout Sheet



Step 1

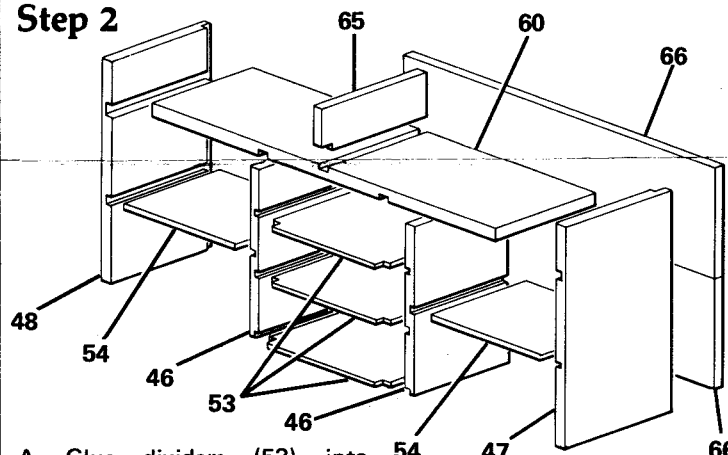


A. Place base (45) flat with rounded edge down. Glue front bracket foot trim (43) so that it is flush with the front (rounded edge) of the base (45).

B. Glue the side bracket foot trim pieces (44) to the base (45) flush with ends and to the front trim (43).

*One foot is narrower than the other. Narrow foot is glued to front trim (43).

Step 2



A. Glue dividers (53) into vertical dividers (46) so that front edge of the notch is flush with front edge of (46). Dividers will protrude approximately 1/8". Glue this assembly into dadoes in long divider (60).

B. Glue shelves (54) into dadoes of (46) and flush with the front edge. Glue sides (47) and

(48) to their respective shelves (54) and to long divider (60). Fronts should be flush with (60).

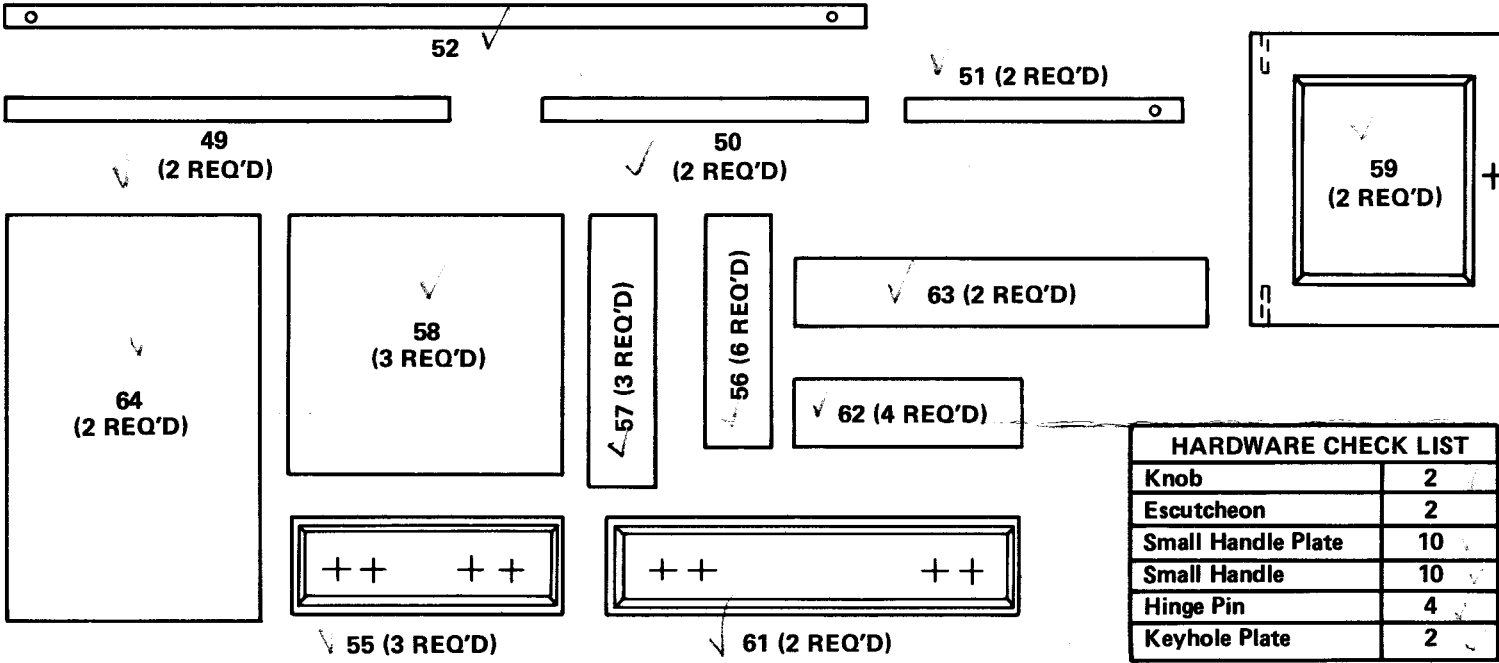
C. Glue back panels (66) together then proceed to glue to back of dividers and sides.

D. Glue divider (65) into center dado of (60) so that rear of notch is flush with front of (60).

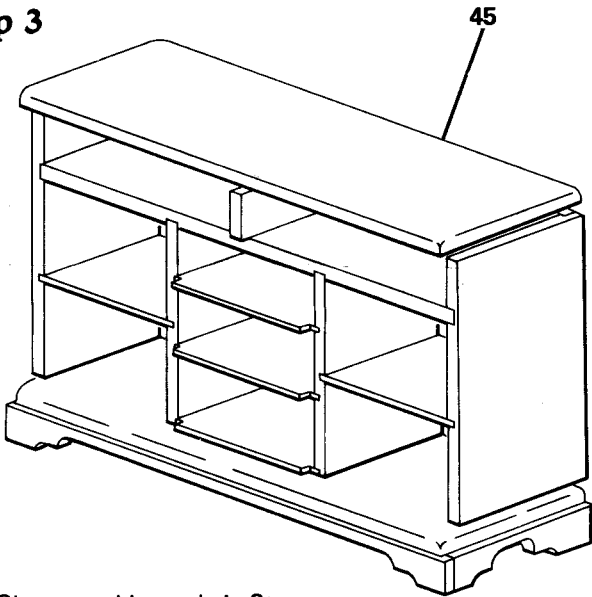
Detail Views

Kit 40053

Layout Sheet



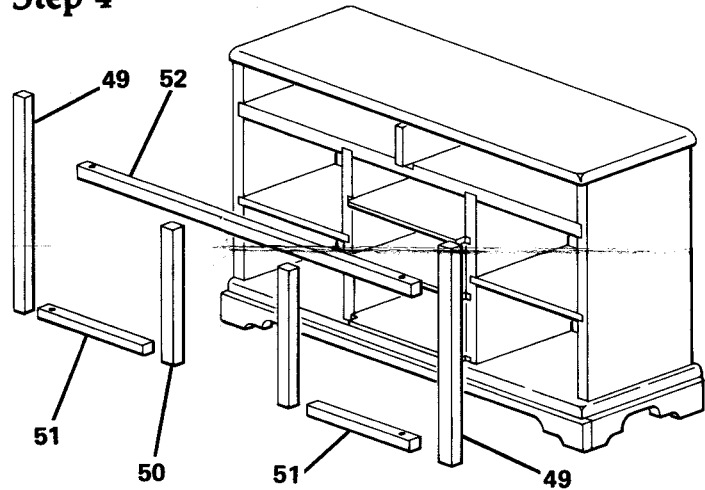
Step 3



A. Glue assembly made in Step 2 to base made in Step 1. Back edges should be flush and assembly centered.

B. Glue top (45) to case assembly with ends and back flush. It will overhang in front.

Step 4



A. Glue vertical trim (49) to front edge of left side flush with outside edge. Repeat on right side.

B. Glue long upper trim (52) to front edge of upper divider so that top edges are flush and hinge pin holes are facing up and down.

C. Glue center trim (50) against center shelves.

D. Glue bottom side trim (51) to base between (49) and (50). Hinge pin holes should face up and down and be towards the outside.

Detail Views

Kit 40053

Step 5

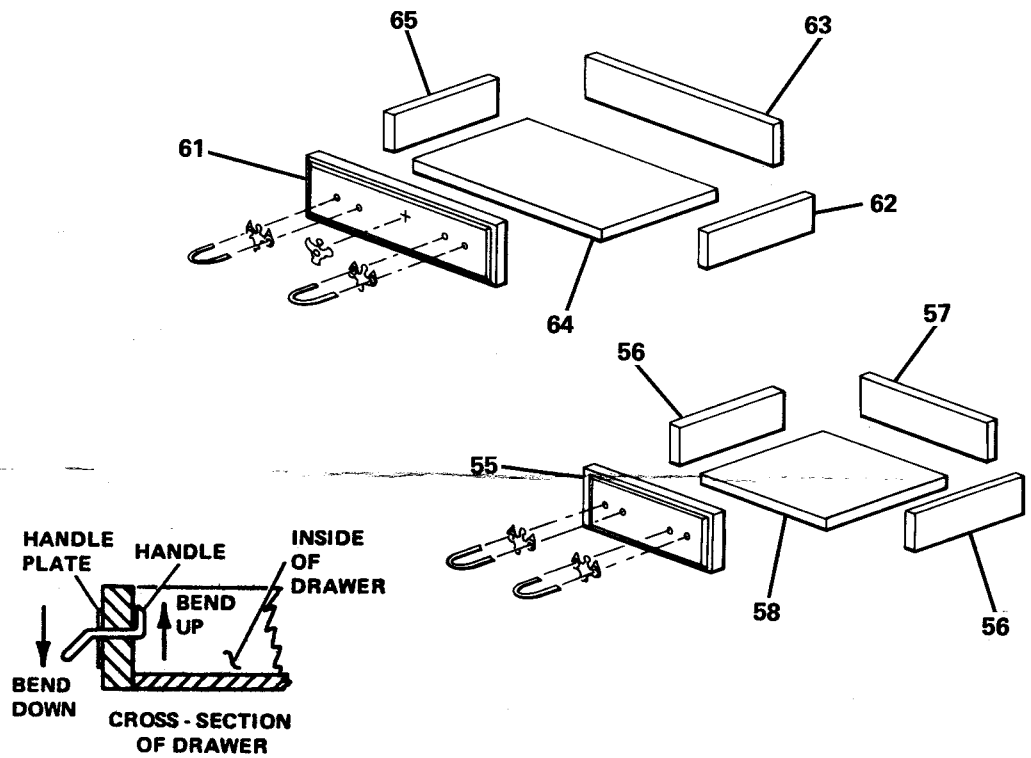
A. Glue drawer sides (62) on top of drawer bottom (64) flush with ends and front edge.

B. Glue drawer back (63) on top of drawer bottom (64) and to drawer sides (62).

C. Pre-drill holes for hardware using + marks on layout sheet as a guide. If entire drawer is to be stained glue drawer fronts (61) on at this point. If not finish drawer front separately. Hardware should be installed after finishing.

D. Build center drawer in the same manner substituting appropriate part numbers in instructions above.

E. Apply Final Finish to main assembly, doors, and drawers.



Step 6

A. Install knob and escutcheon plates on doors using + on layout sheet as position guide. **Caution:** Note position of hinge pin holes before installing knob. You must have a right and left door.

B. Insert hinge pin in hole in bottom of door. It should extend slightly less than 1/8". Trim off excess if necessary. Place door in opening with lower hinge pin in the lower hinge pin hole. Insert upper hinge pin in hole in trim strip and push down into the door's upper hinge pin hole. It should not extend above the trim strip.

C. Install drawers.

